

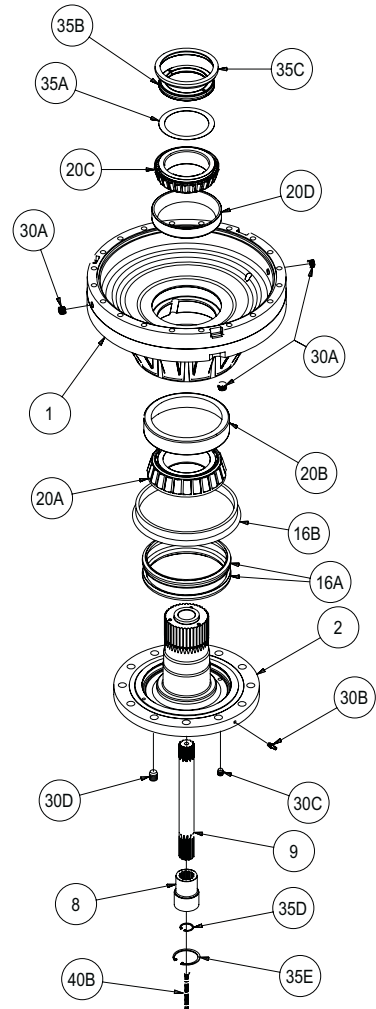
X1400LW3-AA.1
DATE: 10/10/2007

X1400LW3-AA.1

Page 1 of 3

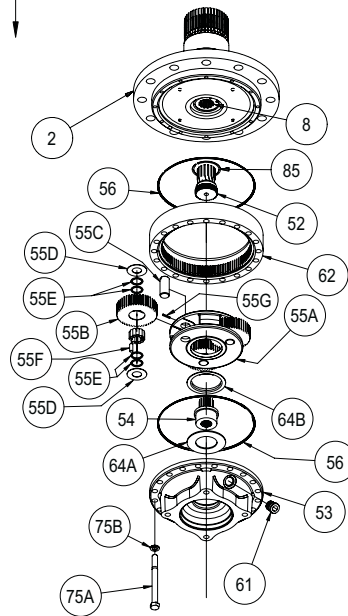
Effective date 10/01/2007

Effective serial # 74362



↑ VIEWED FROM OUTPUT END OF DRIVE

↓ VIEWED FROM INPUT END OF DRIVE



			CORE UNIT:	1400LW-25	1400LW-40	2-STAGE+3-STAGE CORE
MODEL 1400 WHEEL DRIVE				25.48:1 4.96:1 5.33:1	40.41:1 7.76:1 5.33:1	EITHER RATIO + 3RD STAGE
Item #	QTY.	Description	Part Number	Part Number	Part Number	
1	1	BASE	CODE A - FLANGED	60-004-3124		SEE 2-STAGE
			CODE F - FLANGELESS	60-004-3138		SEE 2-STAGE
			CODE CA or CF - CUSTOM	(CUSTOM P/N)		SEE 2-STAGE
2	1	SPINDLE	CODE WD1; SAE 'D' MOTOR MOUNT	60-004-4072L		60-004-4202L
			CODE C1 - CUSTOM	(CUSTOM P/N)		SEE 2-STAGE
3	1	COVER; WHEEL DRIVE	60-004-1444			SEE 2-STAGE
4	1	SUN GEAR -PRIMARY	60-004-1802	60-004-1812		SEE 2-STAGE
5	1	SEC CARR ASSY-5.33:1(1400)	60-005-2133			SEE 2-STAGE
5A	1	CARRIER SEC; 4-PLANET	60-004-1774			SEE 2-STAGE
5B	4	PLANET GEAR; SEC	60-004-1232			SEE 2-STAGE
5C	4	PLANET SHAFT; SEC	60-004-1262			SEE 2-STAGE
5D	8	CONE; SEC. PLNT	01-102-0210			SEE 2-STAGE
5E	8	CUP; SEC.PLNT	01-103-0210			SEE 2-STAGE
5F	4	RETAINING RING; PLANET SHAFT	01-160-0490			SEE 2-STAGE
5G	8	RETAINING RING; PLANET BORE	01-160-0500			SEE 2-STAGE
5H	8	WASHER; SEC	60-004-1291			SEE 2-STAGE
5J	8	SHIM; SEC. PLNT	60-004-1321			SEE 2-STAGE
5K	4	ROLL PIN; 1/4 x 1 3/8	01-153-0150			SEE 2-STAGE
5L	1	PLATE; SEC CARRIER RETAINER	60-004-1352			SEE 2-STAGE
6	1	SUN GEAR -SECONDARY	60-004-1792			SEE 2-STAGE
7	1	PRIMARY CARRIER ASSY-1400	60-005-2113	60-005-2123		SEE 2-STAGE
7A	1	CARRIER; PRIMARY	60-004-1372	60-004-1722		SEE 2-STAGE
7B	3	PLANET GEAR; PRIMARY	60-004-1862	60-004-1872		SEE 2-STAGE
7C	3	PLANET SHAFT; PRIMARY	60-004-1272			SEE 2-STAGE
7D	6	THRUST WASHER; PRIMARY PLANET	60-004-1881			SEE 2-STAGE
7E	12	SPACER WASHER; PRI ROLLER; 4 PER SHAFT	60-004-1891			SEE 2-STAGE
7F	168	LOOSE ROLLER; 2 X 28 PER SHAFT	01-106-0050			SEE 2-STAGE
7G	3	ROLL PIN; 1/4 x 1 3/8	01-153-0150			SEE 2-STAGE
7H	3	RETAINING RING; PLANET BORE	01-160-0750			SEE 2-STAGE
8	1	INPUT COUPLING	16T X 13T	60-004-1422		60-004-1422
			13T X 13T	60-004-1692		---
9	1	INPUT SHAFT	60-004-1392			SEE 2-STAGE
10	1	THRUST HUB	60-004-1822			SEE 2-STAGE
12A	1	RING GEAR; SEC.	60-004-1243			SEE 2-STAGE
12B	1	RING GEAR; SIMPLE PRI	60-004-1193			SEE 2-STAGE
14A	2	THRUST RACE; PRI CARR	01-112-0350			SEE 2-STAGE
14B	1	THRUST BRG; PRI CARR	01-112-0340			SEE 2-STAGE
14C	1	BALL BEARING	01-100-0320			SEE 2-STAGE
16A	1	SEAL; METAL FACE	01-406-0010			SEE 2-STAGE
16B	1	SEAL-RUBBER/FACE	01-406-0020			SEE 2-STAGE
16C	3	O-RING; RING GEAR	01-402-0660			SEE 2-STAGE
16D	1	O-RING	01-402-0220			SEE 2-STAGE

X1400LW3-AA

Page 2 of 3

Effective date 10/01/2007

Effective serial # 74362

Model 1400 Wheel Drive Ratio breakdown								
Unit	110	143	160	174	218	227	248	338
Stg I	4.31	5.61	6.30	4.31	8.57	5.61	6.30	8.57
Stg II/Primary	4.96	4.96	4.96	7.76	4.96	7.76	7.76	7.76
Stg III/Secondary	5.33	5.33	5.33	5.33	5.33	5.33	5.33	5.33

20A	1	BRG CONE; OUTER	01-102-0190	SEE 2-STAGE
20B	1	BRG CUP; OUTER	01-103-0190	SEE 2-STAGE
20C	1	BRG CONE; INNER	01-102-0230	SEE 2-STAGE
20D	1	BRG CUP; INNER	01-103-0230	SEE 2-STAGE
25A	3	FLAT HD SOC C.S.; SEC CARR RET. (3/8-24X1 GR-8)	01-150-1590	SEE 2-STAGE
25B	6	SHCS (1/4-20X1/2 GR 8)	01-150-0560	SEE 2-STAGE
25C	20	HHCS (3/4-10 x 10.5 GRD 8)	01-150-1580	SEE 2-STAGE
25D	20	LOCKWASHER; 3/4	01-166-0360	SEE 2-STAGE
30A	6	PIPE PLUG (3/4 NPT MAGNETIC)	01-207-0100	SEE 2-STAGE
30B	1	GR. FIT; STR.1/8 NPT (O.D. of spindle flange)	01-215-0010	SEE 2-STAGE
30C	1	PIPE PLUG; 1/8 NPT (face of spindle flange)	01-207-0030	---
30D	1	PIPE PLUG; 1/4 NPT (face of spindle shaft)	01-207-0020	---
35A	2	SHIM; OUTPUT SHAFT	60-004-1311	SEE 2-STAGE
35B	1	SPLIT RING (L-SEGMENT)	60-004-1482	SEE 2-STAGE
35C	1	LOCK RING	60-004-1472	SEE 2-STAGE
35D	1	RETAINING RING (input gear OR coupling)	01-160-0580	SEE 2-STAGE
35E	1	RETAINING RING (Input Cplg. in Shaft)	01-160-0060	SEE 2-STAGE
40	1	PLUG; NON-DISCONNECT OPTION	01-208-0080	SEE 2-STAGE
	1	DISCONNECT KIT (OPTION 'D')	60-005-2143	SEE 2-STAGE
40A	1	DOWEL PIN (5/8X3-1/2)	01-152-0130	SEE 2-STAGE
40B	1	SPRING 6.0X.75X.54X23PPI	01-261-0550	SEE 2-STAGE
40C	1	DISCONNECT PLATE - 600/1400 WD	60-004-1832	SEE 2-STAGE
40D	2	HHCS; 5/16-18X1 GR5	01-150-1790	SEE 2-STAGE
40E	2	LOCKWASHER (5/16)	01-166-0110	SEE 2-STAGE
40F	1	O-RING	01-402-0900	SEE 2-STAGE

MODEL 254 THIRD STAGE (RATIOS > 50:1)			CORE UNIT:	1400W-254-4	1400W-254-5	1400W-254-6	1400W-254-8	
			3RD-STAGE RATIO:	4.31	5.61	6.30	8.57	
52	1	SPLINED ADAPTOR SHAFT		60-004-1752				
53	1	MOTOR MOUNT	CODE C - SAE 'C' (2 & 4 BOLT)	25-004-_____ (PNNYA)				
			CODE D - SAE 'D' (4 BOLT)	25-004-1832				
54	1	INPUT GEAR	CODE 4 - 14T 12/24 DP SPLINE	25-004-1732	25-004-1792	25-004-1742	25-004-1812	
			CODE 9 - 13T 8/16 DP SPLINE	25-004-1762	25-004-1802	25-004-1772	25-004-1782	
55	1	CARRIER ASSY - THIRD STAGE		25-005-2201	25-005-2181	25-005-2211	25-005-2171	
55A	1	CARRIER - 3RD STAGE		25-004-1692	25-004-1642	25-004-1702	25-004-1412	
55B	3	PLANET GEAR - 3RD STAGE		25-004-1712	25-004-1652	25-004-1722	25-004-1552	
55C	3	PLANET SHAFT - 3RD STAGE		25-004-1442				
55D	6	THRUST WASHER - 3RD STAGE PLANET		25-004-1582				
55E	12	SPACER WASHER - 3RD STAGE; 4 PER SHAFT		25-004-1592				
55F	36	LOOSE ROLLER; 12 PER SHAFT		01-106-0010				
55G	3	ROLL PIN; 3/16 X 1		01-153-0020				
85	1	RETAINING RING		01-160-0020				
56	2	O-RING - RING GEAR		01-402-0020				
61	1	PLUG; MOTOR MOUNT		01-208-0030				
62	1	RING GEAR-PRI		25-004-1822				
64A	1	THRUST WASHER - INPUT GEAR		25-004-1752				
64B	2	THRUST WASHER - CARRIER		25-004-1132				
75A	12	SOCKET HEAD CAPSCREW; 7/16-20 UNF X 3.5 GR 8		01-150-1940				
75B	12	LOCK WASHER; 7/16 HI-COLLAR		01-166-0440				

X1400LW3-AA

Page 3 of 3

Effective date 10/01/2007

Effective serial # 74362

Model 1400 Wheel Drive Ratio breakdown								
Unit	110	143	160	174	218	227	248	338
Stg I	4.31	5.61	6.30	4.31	8.57	5.61	6.30	8.57
Stg II/Primary	4.96	4.96	4.96	7.76	4.96	7.76	7.76	7.76
Stg III/Secondary	5.33	5.33	5.33	5.33	5.33	5.33	5.33	5.33