

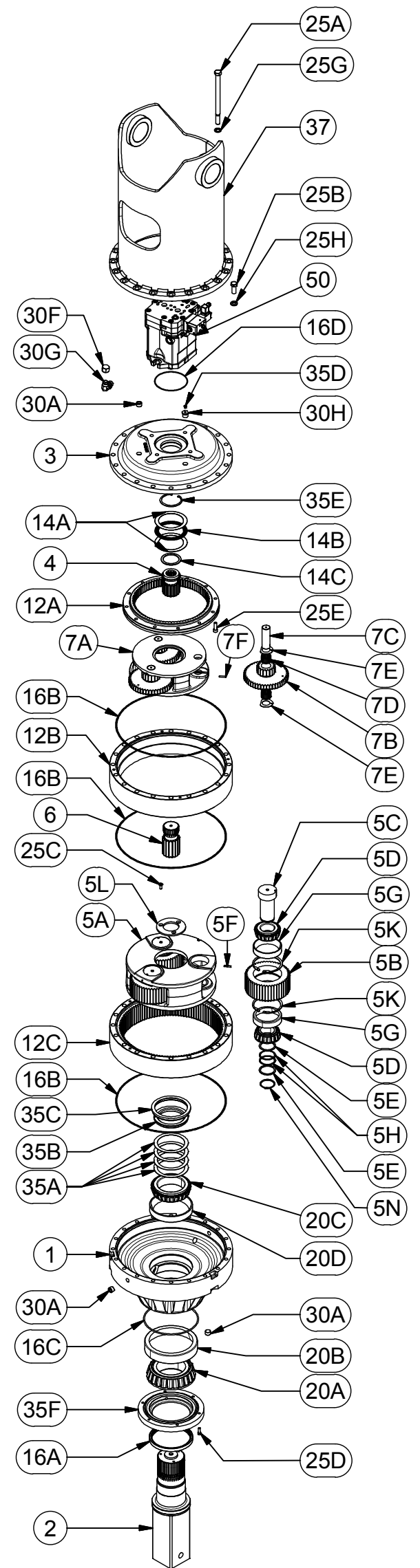


STANDARD

600110-54F136D9

EFFECTIVE FROM: SN-05-15-17 159696

PARTS LIST				
GROUP	ITEM	QTY	PART NUMBER	DESCRIPTION
	1	1	60-004-3014	BASE-FLANGELESS-F600/F1000
	2	1	60-004-4222L	SHAFT - 600/1000 - D2
	3	1	60-004-1074	COVER
	4	1	60-004-1142	INPUT GEAR
5	5	1	60-005-2063	CARRIER ASSY SEC. 5.33:1 1000
	5A	1	60-004-1054	CARRIER SEC
	5B	3	60-004-1112	PLANET GEAR SEC
	5C	3	60-004-1262	PLANET SHAFT - SEC. 600/1400
	5D	6	01-102-0210	TAPERED BEARING CONE
	5E	6	60-004-1291	WASHER - SEC. PLANET 600 1000 1400
	5F	3	01-153-0150	ROLL PIN 1/4" X 1-3/8"
	5G	6	01-103-0210	TAPERED BEARING CUP
	5H	6	60-004-1321	SHIM-SECONDARY PLANET
	5K	6	01-160-0500	RETAINING RING
	5L	1	60-004-1352	SECONDARY CARRIER RETAINER
	5N	3	01-160-0490	RETAINING RING; EXTERNAL; 5100-262
	6	1	60-004-1102	SUN GEAR
7		1	60-005-2033	PRIMARY CARRIER ASSY
	7A	1	60-004-6109	CARR.-PRI(7.76/14.33/18.20:1)
	7B	3	60-004-1162	CLUSTER GEAR-600
	7C	3	60-004-1272	PLANET SHAFT - PRI
	7D	6	01-105-0510	NEEDLE ROLLER AND CAGE ASSY
	7E	6	60-004-6110	WASHER - THRUST- PRI
	7F	3	01-153-0150	ROLL PIN 1/4" X 1-3/8"
12	-	-	-	RING GEARS
	12A	1	60-004-1213	RING GEAR - COMPOUND PRI
	12B	1	60-004-1253	RING SPACER - CMPD PRI - 600/1000
	12C	1	60-004-1193	RING GEAR - SEC- 600; PRI 600/1000 SIMPLE
14	-	-	-	THRUST WASHERS & BEARINGS
	14A	2	01-112-0350	THRUST RACE AS120155
	14B	1	01-112-0340	THRUST BRG AXK120155
	14C	1	01-112-0060	THRUST WASHER
16	-	-	60-016-2076	SEAL KIT
	16A	1	01-405-0810	SEAL
	16B	3	01-402-0660	O-RING
	16C	1	01-402-0670	O-RING 2-377
	16D	1	01-402-0890	O-RING
20	-	-	-	OUTPUT SHAFT BEARINGS
	20A	1	01-102-0190	BEARING CONE
	20B	1	01-103-0190	BEARING CUP
	20C	1	01-102-0220	BRG CONE
	20D	1	01-103-0220	BEARING CUP
25	-	-	-	HARDWARE
	25A	20	01-150-1720	HHCS (3/4-10 x 11.5 GRD 8)
	25B	2	01-150-1890	HHCS (3/4-10 UNC 1.75" GR5)
	25C	3	01-150-1590	FLAT HD SOC C.S.;GR8 3/8-24X1
	25D	6	01-150-1110	SOCKET HEAD CAP SCREW
	25E	12	01-150-0570	SOC HD CAP SCREW
	25G	20	01-166-0350	HARDWASHER - 3/4; 1.25 O.D.
	25H	2	01-166-0360	LOCKWASHER 3/4" MED.
30	-	-	-	PLUGS AND FITTINGS
	30A	5	01-207-0100	PIPE PLUG 3/4 NPT MAGNETIC
	30F	1	01-201-0760	CAP
	30G	1	01-201-0792	FITTING
	30H	1	01-201-0530	ADAPTOR
35	-	-	-	MISCELLANEOUS
	35A	*	60-004-1311	SHIM - SHAFT, 600/1400
	35B	1	60-004-1482	SPLIT RING - 600/1000/1400
	35C	1	60-004-1472	LOCKING RING
	35D	1	01-216-0020	RELIEF VALVE
	35E	1	01-160-0510	RETAINING RING; INTERNAL
	35F	1	60-004-1922	SEAL CARRIER - D1400
	37	1	60-005-1622	BAIL ASSY
	50	1	01-304-1360	MOTOR



*QUANTITY DEPENDANT UPON DESIRED BEARING PRELOAD
X600110-54F136D9 ECN: - REV: A 05-11-17