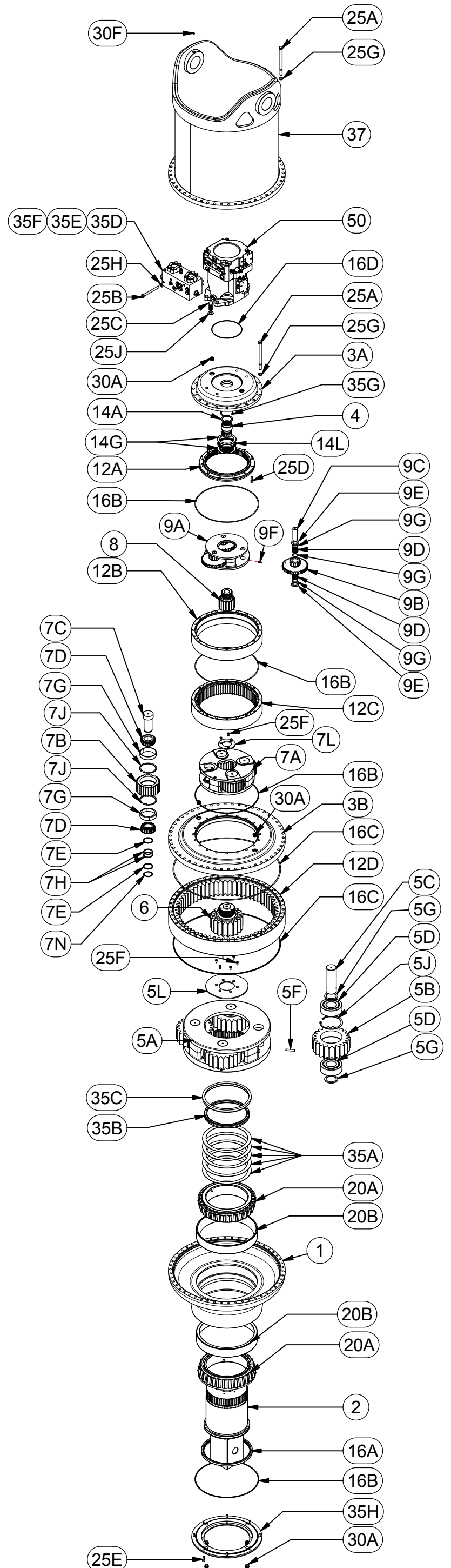




375334-85F104BP
EFFECTIVE FROM: SN 122100 04-17-14 TO PRESENT

PARTS LIST				
GROUP	ITEM	QTY	PART NUMBER	DESCRIPTION
	1	1	45-004-3001	BASE
	2	1	45-004-4001	SHAFT
3	-	-	-	COVERS
	3A	1	60-004-1961	COVER
	3B	1	45-004-2001	COVER
	4	1	45-004-1006	INPUT GEAR
5	-	(1)	45-005-2001	CARRIER ASSEMBLY
	5A	1	45-004-1010	CARRIER - 4500 - 4.42:1
	5B	4	45-004-1003	PLANET GEAR
	5C	4	45-004-1004	PLANET SHAFT
	5D	8	01-110-0130	SPHERICAL ROLLER BEARING
	5F	4	01-153-0242	ROLL PIN
	5G	8	45-004-1008	THRUST WASHER
	5J	4	01-160-0828	RETAINING RING
	5L	1	45-004-1005	PLATE - 4500 SEC CARRIER
	6	1	45-004-1002	SUN GEAR
7	-	(1)	45-005-2001	CARRIER ASSEMBLY - SEC
	7A	1	60-004-1774	CARRIER - SEC
	7B	4	60-004-1232	PLANET GEAR SEC
	7C	4	60-004-1262	PLANET SHAFT - SEC. 600/1400
	7D	8	01-102-0210	TAPERED BEARING CONE
	7E	8	60-004-1291	WASHER - SEC. PLANET 600 1000 1400
	7F	4	01-153-0150	ROLL PIN 1/4" X 1-3/8"
	7G	8	01-103-0210	TAPERED BEARING CUP
	7H	8	60-004-1321	SHIM-SECONDARY PLANET
	7J	8	01-160-0500	RETAINING RING
	7L	1	60-004-1352	SECONDARY CARRIER RETAINER
	7N	4	01-160-0490	RETAINING RING; EXTERNAL; 5100-262
8	-	1	60-004-1792	SUN GEAR
9	-	(1)	60-005-2203	CARRIER ASSEMBLY
	9A	1	60-004-1722	CARRIER - PRI
	9B	3	60-004-1960	CLUSTER GEAR- LOOSE ROLLER
	9C	3	60-004-1272	PLANET SHAFT - PRI
	9D	168	01-106-0050	PLANET ROLLER
	9E	6	60-004-1881	WASHER-PRI PLANET
	9F	3	01-153-0150	ROLL PIN 1/4" X 1-3/8"
	9G	12	60-004-1891	SPACER WASHER (1400 PRI)
	9H	3	01-160-0750	RETAINING RING; INTERNAL; 5008-187
12	-	-	-	RING GEARS
	12A	1	60-004-1213	RING GEAR - COMPOUND PRI
	12B	1	60-004-1253	RING SPACER - CMPD PRI - 600/1000
	12C	1	60-004-1243	RING GEAR - SEC- 1000
	12D	1	45-004-1001	RING GEAR
14	-	-	-	THRUST WASHERS & BEARINGS
	14A	1	01-112-0060	THRUST WASHER
	14G	2	01-112-0350	THRUST RACE AS120155
	14L	1	01-112-0340	THRUST BRG AXK120155
16	-	(1)	45-016-2001	SEAL KIT
	16A	1	01-405-0838	SEAL
	16B	4	01-402-0660	O-RING
	16C	2	01-402-1015	O-RING 34.5 ID
	16D	1	01-402-1016	O-RING 272
20	-	-	-	OUTPUT SHAFT BEARINGS
	20A	2	01-102-0315	BEARING CONE
	20B	2	01-103-0315	BEARING CUP
25	-	-	-	HARDWARE
	25A	70	01-150-1580	HEX HEAD CAP SCREW
	25B	8	01-150-2072	HEX HEAD CAP SCREW (M16X2X180)
	25C	4	01-150-2070	HHCS (M24X3X55mm C8.8)
	25D	12	01-150-0570	SOC HD CAP SCREW
	25E	8	01-150-0030	SHCS-1/2-13 X 1-1/4 GR. 8
	25F	9	01-150-1590	FLAT HD SOC C.S.;GR8 3/8-24X1
	25G	70	01-166-0350	HARDWASHER - 3/4; 1.25 O.D.
	25H	8	01-166-0230	FLAT WASHER (5/8 SAE)
	25J	4	01-166-0490	FLAT WASHER (M24 ZINC)
30	-	-	-	PLUGS & FITTINGS
	30A	8	01-208-0030	HOLLOW HEX PLUG (05HP-12)
	30F	2	01-215-0050	GREASE FITTING
35	-	-	-	MISCELLANEOUS
	35A	5	45-004-1007	SHIM
	35B	1	45-004-1012	SPLIT RING - 4500
	35C	1	45-004-1011	LOCKING RING
	35D	1	01-308-0180	ANTI-SPIN BACK MANIFOLD
	35E	2	01-201-0778	SPLIT FLANGE KIT
	35F	2	01-201-0779	SPLIT FLANGE PLUG
	35G	1	01-160-0510	RETAINING RING; INTERNAL
	35H	1	45-004-1000	SEAL CARRIER
	37	1	45-005-2011	BAIL ASSY
	50	1	01-304-1050	MOTOR



*QUALITY OF SHIMS DEPENDANT UPON DESIRED BEARING PRELOAD
X375334-85F104BP ECN: - REV: A 08-19-14 HWP