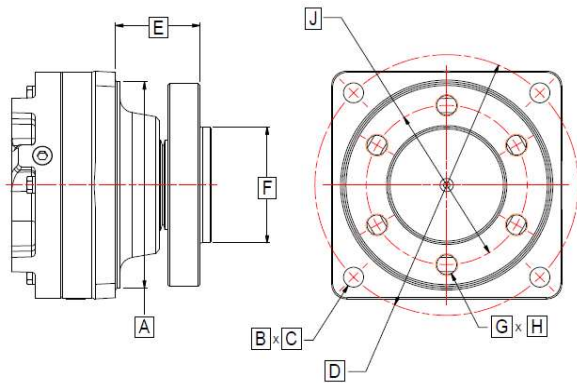
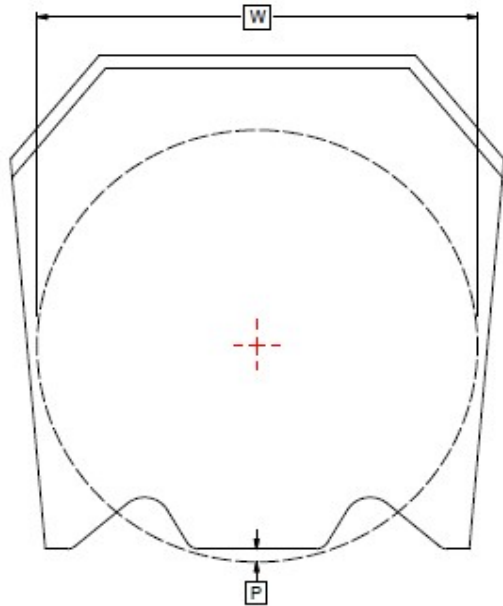




# Bearing Adapter Application Data Form

TEL (913) 782-1238  
 FAX (913) 782-4206  
 sales@eskridgeinc.com  
 www.eskridgeinc.com  
 Form: ADF-BA-1  
 Page: 1 of 1



Date: \_\_\_\_\_  
 Company: \_\_\_\_\_  
 Address: \_\_\_\_\_  
 \_\_\_\_\_  
 Telephone: \_\_\_\_\_  
 Email: \_\_\_\_\_  
 Contact: \_\_\_\_\_  
 Application: \_\_\_\_\_

### Technical Data

Type of Machine: \_\_\_\_\_  
 Type of Cutter: \_\_\_\_\_  
 Current Drive: \_\_\_\_\_  
 Cutting Width: **W** \_\_\_\_\_ in  
 Cutter Capacity, Dia. Of Tree: \_\_\_\_\_ in  
 Max Cutter Speed: \_\_\_\_\_ RPM  
 Blade Carrier Weight: \_\_\_\_\_ lbs  
 Stump Grinding Teeth:  Yes  No  
 Plunge Cutting Capability:  Yes  No  
 Plunge Cutting Depth: **P** \_\_\_\_\_ in

### Bearing Adapter Data

Annual Requirements: \_\_\_\_\_ Qty/yr  
 Output Shaft Position:  Up  Down  Horz  
 Mounting Pilot Diameter: **A** \_\_\_\_\_ in  
 # of Mounting Holes: **B** \_\_\_\_\_  
 Hole Diameter: **C** \_\_\_\_\_ in  
 Bolt Circle: **D** \_\_\_\_\_ in  
 Spindle Drop: **E** \_\_\_\_\_ IN

### Hydraulic Motor Data

Fixed  Variable  
 Type: \_\_\_\_\_  
 Manufacturer: \_\_\_\_\_  
 Maximum Displacement: \_\_\_\_\_ in<sup>3</sup>/rev  
 Minimum Displacement: \_\_\_\_\_ in<sup>3</sup>/rev  
 Motor Mount: \_\_\_\_\_  
 Pilot: \_\_\_\_\_ in Spline Data: \_\_\_\_\_  
 Max. System Pressure: \_\_\_\_\_ PSI  
 Cont. System Pressure: \_\_\_\_\_ PSI  
 Maximum Flow: \_\_\_\_\_ GPM  
 Continuous Flow: \_\_\_\_\_ GPM

### Output Spindle Data

Spindle Pilot Diameter: **F** \_\_\_\_\_ in  
 # of Mounting Holes: **G** \_\_\_\_\_  
 Threads: **H** \_\_\_\_\_  
 Bolt Circle: **J** \_\_\_\_\_ in